

June 1996

Spectrum

Center for Remote Sensing and GIS, Michigan State University

Aerial Imagery Archive Expands

New Data and Services Available

The Aerial Imagery Archive at the Center for Remote Sensing and GIS at Michigan State University is expanding its data sources and services available to the University and to the public. To accommodate these changes, the archive has doubled the space which it previously occupied. This additional space was necessitated by the need for more imagery filing cabinets and to provide more work space for archive users.

***Inside
This
Issue***

- New Archive Services Available
- Michigan Statewide Digital Aerial Photography Available
- Archive to Become Source of Statewide Digital Data Sets
- **New Archive telephone number (517) 355-3771**



Aerial Photograph of Michigan's capitol

(continued)

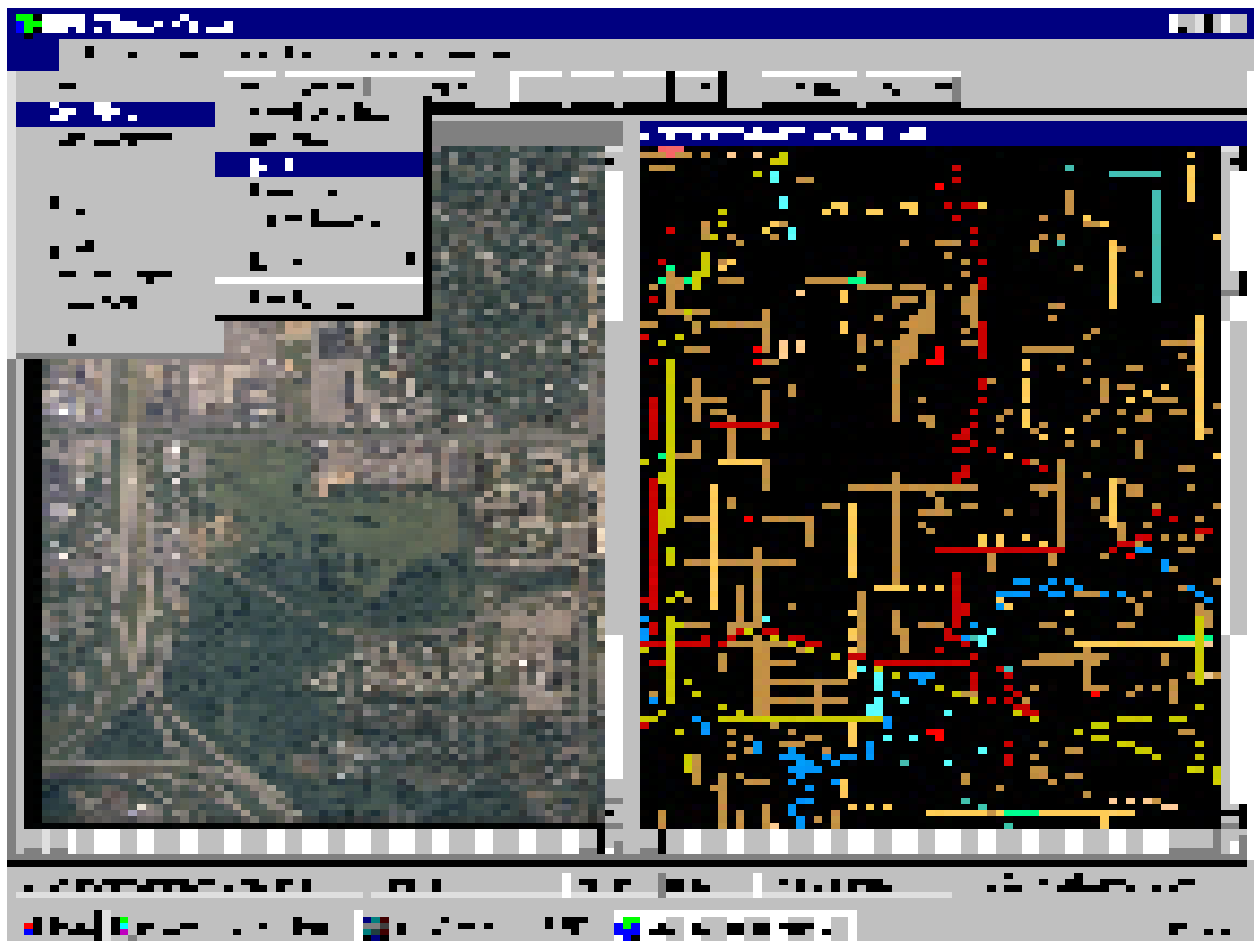
To supplement its collection of aerial imagery, the archive has expanded its holdings of ancillary data sources. In particular, the archive now maintains a complete collection of U.S. Geological Survey topographic maps for the state of Michigan. In addition, the archive has a complete set of Soil Surveys published for Michigan and a partial set of Plat Books (new and historic).

Michigan Statewide Digital Aerial Photography Available

The archive has also become the contact point for digital imagery available from the Center for Remote Sensing and GIS. The Center has converted statewide 35mm aerial photography, acquired by the U.S. Department of Agriculture (USDA), to a digital format using Kodak Photo CD technology. The approximately 55,000 slides were obtained by USDA in 1991-92. These photos put you nearly 10,000 feet above the ground for an unsurpassed view of the landscape below. You can zoom in for a closer look at your city,

neighborhood, or even your own home.

- Virtually the entire state of Michigan is contained in this digital atlas
- Photos are available for all counties, one county per CD
- All photos are true color images
- Each photo covers one section (one square mile) in every township
- Map indexes are included for locating individual sections
- An image viewer is included on each disc

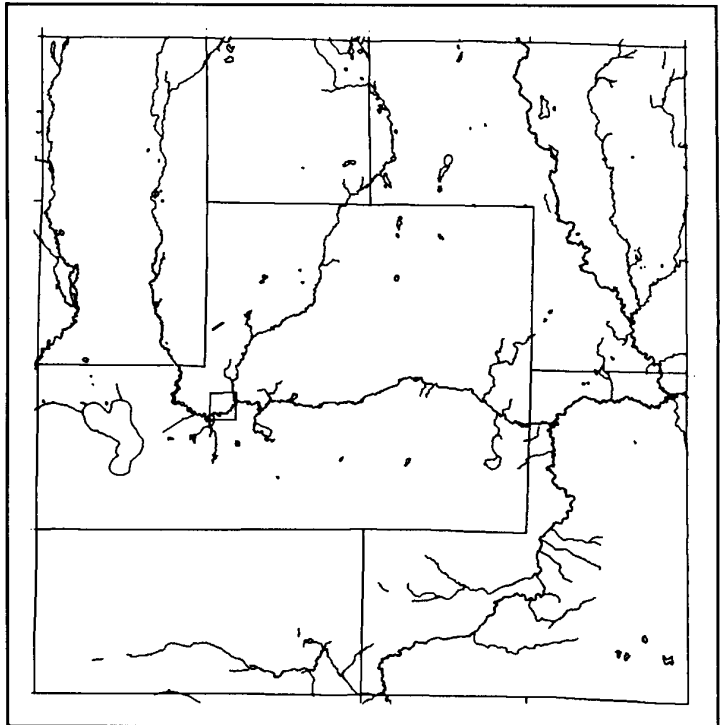
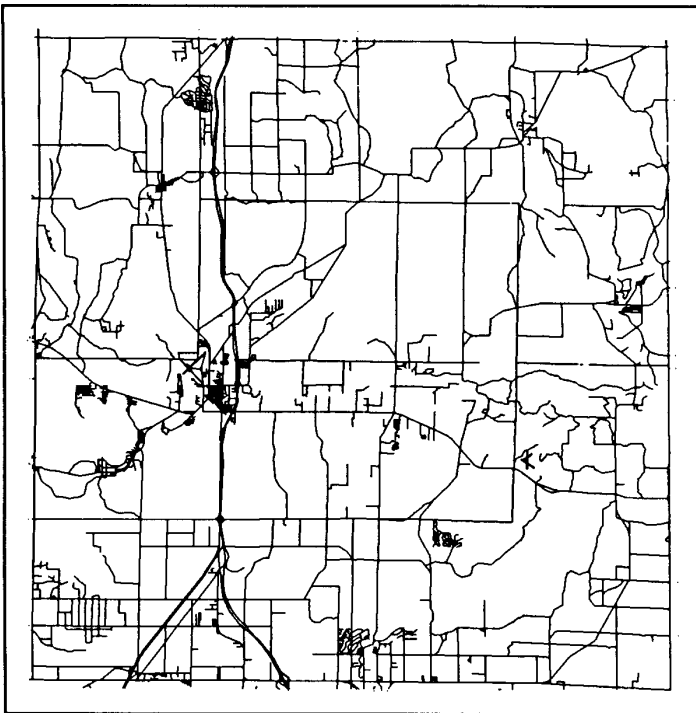


Archive to Become Source of Statewide Digital Data Sets

The Center for Remote Sensing and GIS will further expand its services by providing access to digital data sets and maps through the Imagery Archive. Literally hundreds of maps are available in digital form and will be indexed and made available through the archive. In addition, software for viewing or manipulating the data will be available along with a limited amount of output support (e.g., printers and plotters).

One of the largest data sets currently available for use in the archive is the statewide series of base maps and land use/cover maps produced by the Michigan Resource Inventory Program (MIRIS) by the Michigan Department of Natural Resources. Base maps are available for all counties and are digital representations of selected base map features depicted on U.S. Geological Survey topographic maps. Features include

transportation and hydrologic networks, political boundaries, and major land survey systems but do not include topographic contour lines. Land use and land cover data are likewise available for all counties. These data represent land use/cover within fifty-some categories of urban, agriculture, woodland, open, water, wetlands, or barren land types. The archive also has digital maps from several sand dune programs, including; the Atlas of Critical Dunes, Barrier Dunes and permitted sand dune operations, and dune geomorphology maps for most coastal dune areas of the state.



New Archive Procedures

Beginning in July, several changes will be implemented to better service archive users. Archive assistants will be available on-site to provide access to the archive and to provide any necessary assistance. Appointments will be taken by the archive assistants at the **NEW** archive telephone number: **(517) 355-3771**.

Spectrum

**Acting
Coordinator
Manager
Editor** *Dick Groop
Bill Enslin
Dennis Hudson*

Spectrum is published by the Center for Remote Sensing and GIS at Michigan State University. Correspondence should be addressed to Dennis Hudson, Editor, Spectrum, Center for Remote Sensing and GIS, Michigan State University, 1405 S. Harrison Road, East Lansing, Michigan 48823-5243.
Phone (517) 353-7195.

MSU is an affirmative action/equal opportunity institution.

Telephone Directory

Brian Buckley	355-4519	buckley@pilot.msu.edu
Bill Enslin	355-3276	enslin@pilot.msu.edu
Dennis Hudson	355-1886	hudsonw@pilot.msu.edu
Dave Lusch	355-8497	lusch@pilot.msu.edu
Tamsyn Mihalus	353-7198	mihalus@pilot.msu.edu
Towonna Williams	353-8709	willi401@pilot.msu.edu
Imagery Archive	355-3771	
General Info	353-7195	

Center for Remote Sensing and GIS
Michigan State University
1405 S. Harrison Road
East Lansing, MI 48823

Non-Profit Org.
U.S. POSTAGE
PAID
E. Lansing, MI
Permit No. 21